

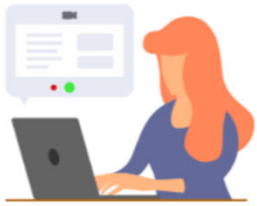
---

# Innovation, Strategy & Educational Technology Department



# ~~ISET DEPARTMENT~~ REMOTE LEARNING SUPPORT

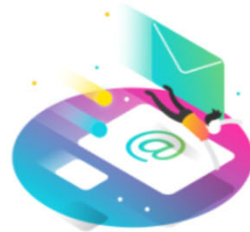
65 Total PD Hours



5,146 Teachers Registered for PD



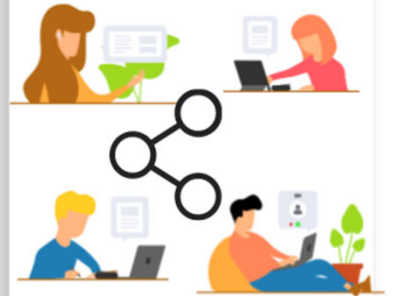
On-Demand Email Assistance



On-Demand Assistance through Teams



Virtual School Visits



Recorded Workshops and Tutorials



Virtual Coding Club



Mobile Hotspot Distribution Assistance



---

# 2020-2021 Educational Technology Support



FAQ VIDEO  
TUTORIALS  
LIBRARY



Seesaw



FAMILY  
WORKSHOPS



TEACHER  
WORKSHOPS



CURRICULUM  
WRITING





# Summer Curriculum Writing for Remote Learning



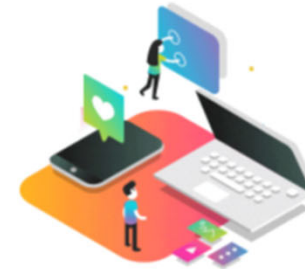
## District Activity Library

Activities were created  
and added to the  
District's activity library  
C&I & Bilingual Support



## 6th Grade Math Curriculum

Available Google  
Classroom Activities for  
6th Grade Math



## Digital Resources

Digital Resources  
accessible for sharing  
digitally for Elementary  
teachers

# MATH INNOVATION ZONES



## 47 Math Innovation Zones Districts and Charters

### TEA Blended Learning Planning Grant



#### Participating Districts and Charter Schools

Austin Achieve, Cisco ISD, Dallas ISD, Grand Prairie ISD, KIPP Texas, NYOS Charter, PTAA Charter, Point Isabel ISD, Laredo ISD, Mineola ISD, Southside ISD, Spring Branch ISD, Tulia ISD, Uplift Education

Atlanta ISD, Brooks Academies of Texas, Edcouch-Elsa ISD, El Paso ISD, Iraan-Sheffield ISD, Magnolia ISD, Marshall ISD, Region 16 - Clarendon CISD, Sinton ISD, Spring ISD, Temple ISD, UT Tyler University Academy, Winters ISD

Anahuac ISD, Aransas Pass ISD, Aristoi Classical Academy, Bandera ISD, Brownsville ISD, Chapel Hill ISD, Compass Rose Academy, Crowley ISD, East Central ISD, Ector County ISD, Fruitvale ISD, Garland ISD, Lytle ISD, Palacios ISD, Raul Yzaguirre Schools, Raymondville ISD, Riesel ISD, San Perlita ISD, Uvalde ISD

